



BUILDING CODE COMPLIANCE OFFICE (BCCO)
PRODUCT CONTROL DIVISION

MIAMI-DADE COUNTY, FLORIDA
METRO-DADE FLAGLER BUILDING
140 WEST FLAGLER STREET, SUITE 1603
MIAMI, FLORIDA 33130-1563
(305) 375-2901 FAX (305) 375-2908
www.miamidade.gov/Buildingcode

NOTICE OF ACCEPTANCE (NOA)

Next Door Company
1300 N. W. 74th Street
Miami, Fl. 33147

SCOPE:

This NOA is being issued under the applicable rules and regulations governing the use of construction materials. The documentation submitted has been reviewed by Miami-Dade County Product Control Division and accepted by the Board of Rules and Appeals (BORA) to be used in Miami Dade County and other areas where allowed by the Authority Having Jurisdiction (AHJ).

This NOA shall not be valid after the expiration date stated below. The Miami-Dade County Product Control Division (In Miami Dade County) and/or the AHJ (in areas other than Miami Dade County) reserve the right to have this product or material tested for quality assurance purposes. If this product or material fails to perform in the accepted manner, the manufacturer will incur the expense of such testing and the AHJ may immediately revoke, modify, or suspend the use of such product or material within their jurisdiction. BORA reserves the right to revoke this acceptance, if it is determined by Miami-Dade County Product Control Division that this product or material fails to meet the requirements of the applicable building code.

This product is approved as described herein, and has been designed to comply with the Florida Building Code, including the High Velocity Hurricane Zone.

DESCRIPTIO: Series "S-8080F" Flush Outswing Steel Doors-Impact

APPROVAL DOCUMENT: Drawing No. **W08-85** titled "Series "S-8080F" OutSwing Steel Entrance Door" Sheets 1 through 7 of 7, prepared by Al-Farooq Corporation, dated 10-08-08 and last revised on April 08, 2009, signed and sealed by Dr. Humayuon Farooq, P. E. bearing the Miami-Dade County Product Control Approval stamp with the Notice of Acceptance number and approval date by the Miami-Dade County Product Control Division.

MISSILE IMPACT RATING: Large and Small Missile Impact Resistant

LABELING: Each unit shall bear a permanent label with the manufacturer's name or logo, city, state and following statement: "Miami-Dade County Product Control Approved", unless otherwise noted herein.

RENEWAL of this NOA shall be considered after a renewal application has been filed and there has been no change in the applicable building code negatively affecting the performance of this product.

TERMINATION of this NOA will occur after the expiration date or if there has been a revision or change in the materials, use, and/or manufacture of the product or process. Misuse of this NOA as an endorsement of any product, for sales, advertising or any other purposes shall automatically terminate this NOA. Failure to comply with any section of this NOA shall be cause for termination and removal of NOA.

ADVERTISEMENT: The NOA number preceded by the words Miami-Dade County, Florida, and followed by the expiration date may be displayed in advertising literature. If any portion of the NOA is displayed, then it shall be done in its entirety.

INSPECTION: A copy of this entire NOA shall be provided to the user by the manufacturer or its distributors and shall be available for inspection at the job site at the request of the Building Official.

This NOA consists of this page 1 and evidence page E-1, as well as approval document mentioned above. The submitted documentation was reviewed by **Ishaq I. Chanda, P.E.**



4/21/19

NOA No 09-0112.03
Expiration Date: May 13, 2014
Approval Date: May 13, 2009
Page 1

Next Door Company

NOTICE OF ACCEPTANCE: EVIDENCE SUBMITTED

A. DRAWINGS

1. Manufacturer's parts and sections drawings.
2. Drawing No. **W08-85** titled "Series "S-8080F" OutSwing Steel Entrance Door" Sheets 1 through 7 of 7, prepared by Al-Farooq Corporation, dated 10-08-08 and last revised on April 08, 2009, signed and sealed by Dr. Humayuon Farooq, P. E.

B. TESTS

1. Test reports on
 - 1) Air Infiltration Test, per FBC TAS 202-94
 - 2) Uniform Static Air Pressure Test Loading per FBCTAS 202-94
 - 3) Water Resistance Test, per FBC TAS 202-94
 - 4) Forced Entry Resistance Test, per FBC TAS 202-94
 - 5) Large Missile Impact Test, FBC TAS 201-94
 - 6) Cyclic Loading Test, per FBC TAS 203-94

Along with installation diagram of double outswing steel door, marked-up by Fenestration Testing Laboratories, Inc. Test Reports Nos. **FTL 5578 (FTL08029)**, dated 09/08/08, signed and sealed by Carlos Rionda, P.E.

C. CALCULATIONS:

1. Anchor calculations and structural analysis per FBC 2007, prepared by Al-Farooq Corporation, dated 12/17/08 and last revised on 04/08/09, signed and sealed by Dr. Humayuon Farooq, P.E.

D. QUALITY ASSURANCE

1. Miami Dade Building Code Compliance Office (BCCO).

E. MATERIAL CERTIFICATIONS

1. Tensile Test report No. **FTL08029** Test 1, 2 & 3 dated 23 APR 03 per ASTM A-3705 for steel face sheet, prepared by Fenestration Testing laboratory, signed and sealed by Carlos Rionda, P.E.
2. Notice of Acceptance No. **07-1107.08** issued to Dyplast Product, LLC (Former Apache Products Company) for "EPS-Expanded Polystyrene Insulation", expiring on 01/11/12
3. Test Report No. **3145021COQ-004**, dated March 28, 2008, issued by Intertek. to Next Door Company for "RA-24" Batt Fiberglass Insulation for "Self Ignition Temperature Test" per ASTM E-84-08 for smoke density & Flame spread.
4. Test Report No. **3145021COQ-005**, dated March 28, 2008, issued by Intertek. To Next Door Company for "RA-24" Batt Fiberglass Insulation for "Surface Burning Characterstics" per ASTMD-1929.
5. Test Report No. **3145021COQ-006**, dated March 28, 2008, issued by Intertek. to Next Door Company for "RA-24" Batt Fiberglass Insulation for "Rate of Burning" per ASTM D-635-06.

F. STATEMENTS

1. Statement letter of conformance and no financial interest, dated Dec. 04, 2008, prepared, signed and sealed by Dr. Humayuon Farooq, P.E.
2. Laboratory Compliance statement issued as part of test report.

G. OTHER

1. Test proposal # 07-3699 dated 01/31/08, approved by BCCO. Ishaq I. Chanda

Ishaq I Chanda, P.E.

Product Control Examiner

NOA No 09-0112.03

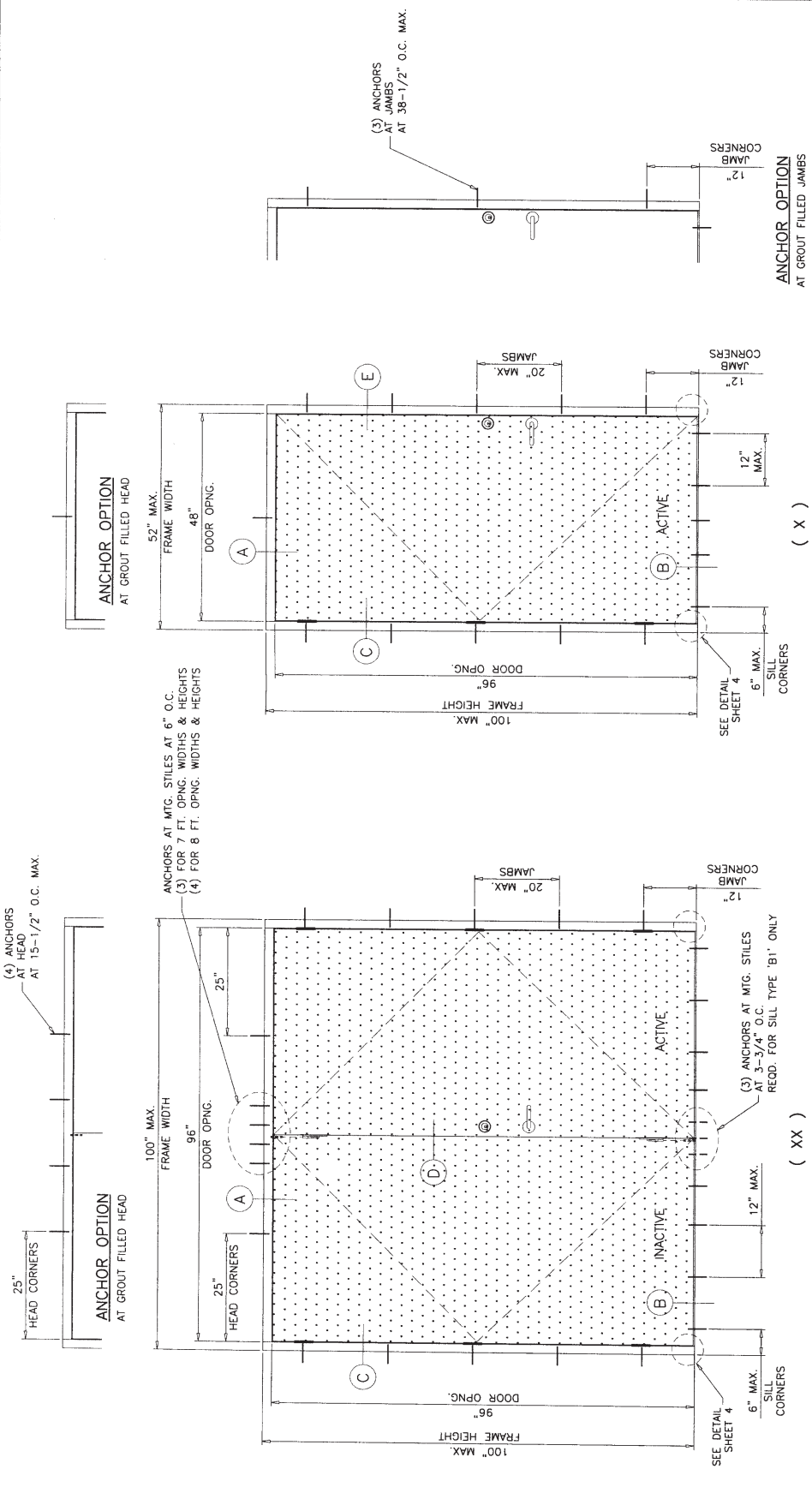
Expiration Date: May 13, 2014

Approval Date: May 13, 2009

no	date	description
A	02.13.08	REV. PER BCCO COMMENTS
B	04.06.09	REV. PER BCCO COMMENTS

date:	10-08-08
scale:	1/2" = 1'-0"
dr. by:	HAMID
chk. by:	

drawing no
W08-85
Sheet 1 of 7



Approved as complying with the Florida Building Code
Date: May 13, 2009
ADMF 07-217E.02
Miami Dade Product Control
By: [Signature]

Eng: DR. KULAYOUN FAROOQ
STRUCTURES
FLA. PE # 16557
C.A.N. 3638
APR 08 2009

NOTE:
GRESS REQUIREMENTS TO BE REVIEWED BY BUILDING OFFICIAL.

MAXIMUM DESIGN LOAD RATING = + 75.0 PSF
(FOR SIZES SHOWN ABOVE OR SMALLER) - 75.0 PSF
AS LIMITED BY CODE

TYPICAL ELEVATIONS
OPTION 1

THIS PRODUCT HAS BEEN DESIGNED AND TESTED TO COMPLY WITH THE REQUIREMENTS OF THE FLORIDA BUILDING CODE 2004/2007 EDITION INCLUDING HIGH VELOCITY HURRICANE ZONE (HVHZ). ANCHORS SHALL BE AS LISTED, SPACED AS SHOWN ON DETAILS, ANCHORS EMBEDMENT TO BASE MATERIAL SHALL BE BEYOND WALL DRESSING OR STUCCO. ANCHORING OR LOADING CONDITIONS NOT SHOWN IN THESE DETAILS ARE NOT PART OF THIS APPROVAL.

MATERIALS INCLUDING BUT NOT LIMITED TO STEEL/METAL SCREWS THAT COME INTO CONTACT WITH OTHER DISSIMILAR MATERIALS SHALL MEET THE REQUIREMENTS OF 2004/2007 FLORIDA BLDG. CODE SECTION 2003.8.4.

DOORS WITH THRESHOLD TYPE B ARE APPROVED FOR INSTALLATION WHERE WATER INFILTRATION RESISTANCE IS REQUIRED.
DOORS WITH THRESHOLD TYPE B1 ARE APPROVED FOR INSTALLATION WHERE WATER INFILTRATION RESISTANCE IS NOT REQUIRED.

ANCHORS AT MTG. STILES AT 6" O.C.
(3) FOR 7 FT. OPNG. WIDTHS & HEIGHTS
(4) FOR 8 FT. OPNG. WIDTHS & HEIGHTS

(4) ANCHORS AT HEAD AT 15-1/2" O.C. MAX.

ANCHORS AT MTG. STILES AT 3-3/4" O.C. REQD. FOR SILL TYPE 'B1' ONLY

(3) ANCHORS AT JAMBS AT 38-1/2" O.C. MAX.

SEE DETAIL SHEET 4

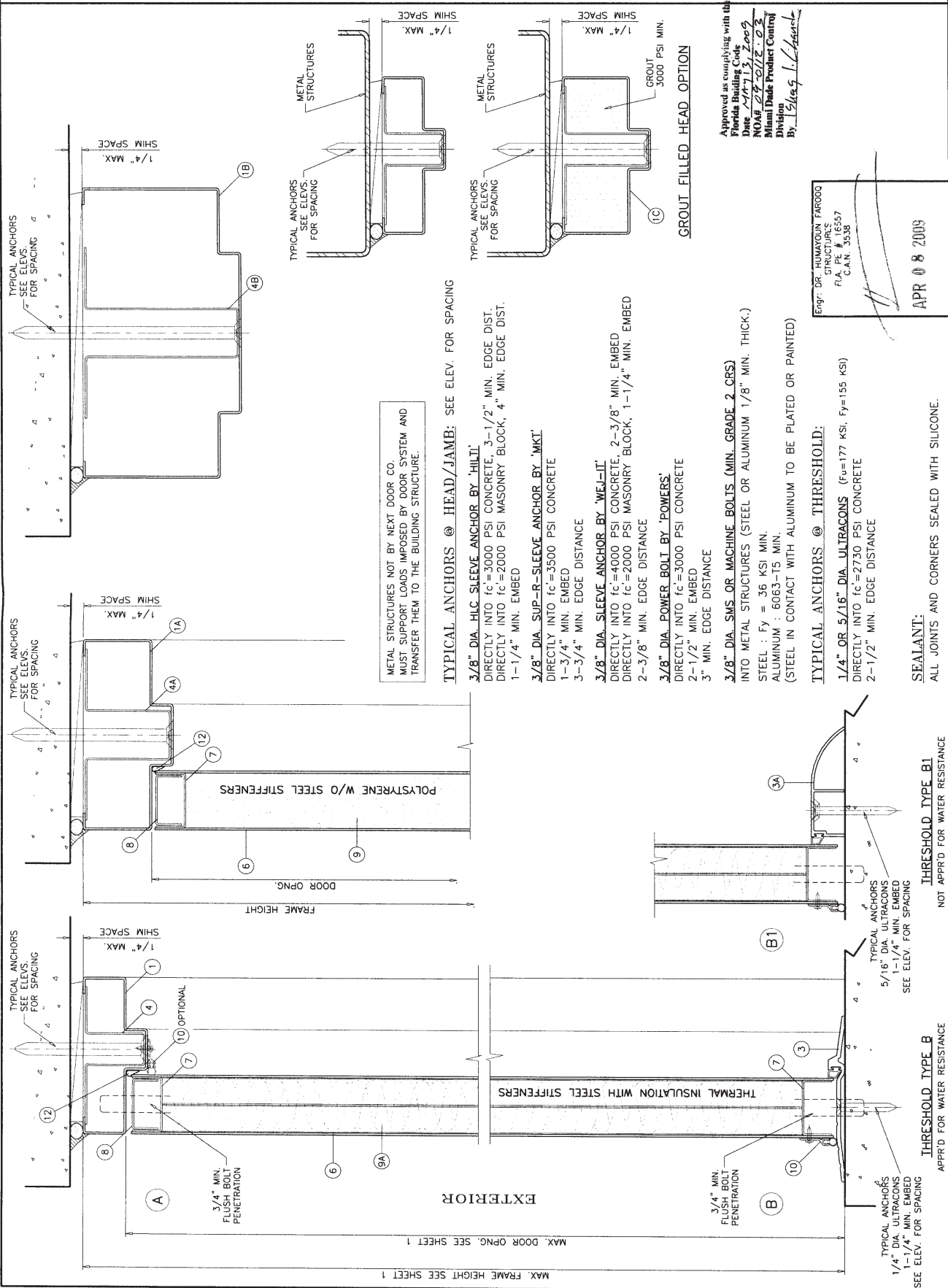
SEE DETAIL SHEET 4

THESE DOORS ARE RATED FOR LARGE MISSILE IMPACT. SHUTTERS ARE NOT REQUIRED.

SERIES-8080F
OUT-SWING COMMERCIAL STEEL ENTRANCE DOOR

SEE SHEET 7 FOR VARIOUS FRAME SIZE OPTIONS.
FRAME JAMB TRIM (WIDTH) = 1-1/4" TO 2"
FRAME JAMB DEPTH = 4-3/4" TO 8-3/4"
FRAME HEAD TRIM (WIDTH) = 1-1/4" TO 4"

NO	DATE	DESCRIPTION
A	02.13.09	REV. PER BCCO COMMENTS
B	04.06.09	REV. PER BCCO COMMENTS



METAL STRUCTURES NOT BY NEXT DOOR CO. MUST SUPPORT LOADS IMPOSED BY DOOR SYSTEM AND TRANSFER THEM TO THE BUILDING STRUCTURE.

TYPICAL ANCHORS @ HEAD/JAMB: SEE ELEV. FOR SPACING

3/8" DIA. HLC SLEEVE ANCHOR BY 'HILLI'
DIRECTLY INTO $f_c = 3000$ PSI CONCRETE, 3-1/2" MIN. EDGE DIST.
DIRECTLY INTO $f_c = 2000$ PSI MASONRY BLOCK, 4" MIN. EDGE DIST.
1-1/4" MIN. EMBED

3/8" DIA. SUP-R-SLEEVE ANCHOR BY 'MKT'
DIRECTLY INTO $f_c = 3500$ PSI CONCRETE
1-3/4" MIN. EMBED
3-3/4" MIN. EDGE DISTANCE

3/8" DIA. SLEEVE ANCHOR BY 'WEJ-IT'
DIRECTLY INTO $f_c = 4000$ PSI CONCRETE, 2-3/8" MIN. EMBED
DIRECTLY INTO $f_c = 2000$ PSI MASONRY BLOCK, 1-1/4" MIN. EMBED
2-3/8" MIN. EDGE DISTANCE

3/8" DIA. POWER BOLT BY 'POWERS'
DIRECTLY INTO $f_c = 3000$ PSI CONCRETE
2-1/2" MIN. EMBED
3" MIN. EDGE DISTANCE

3/8" DIA. SMS OR MACHINE BOLTS (MIN. GRADE 2 CRS)
INTO METAL STRUCTURES (STEEL OR ALUMINUM 1/8" MIN. THICK.)
STEEL: $F_y = 36$ KSI MIN.
ALUMINUM: 6063-T5 MIN.
(STEEL IN CONTACT WITH ALUMINUM TO BE PLATED OR PAINTED)

TYPICAL ANCHORS @ THRESHOLD:
1/4" OR 5/16" DIA. ULTRACONS ($F_u = 177$ KSI, $F_y = 155$ KSI)
DIRECTLY INTO $f_c = 2730$ PSI CONCRETE
2-1/2" MIN. EDGE DISTANCE

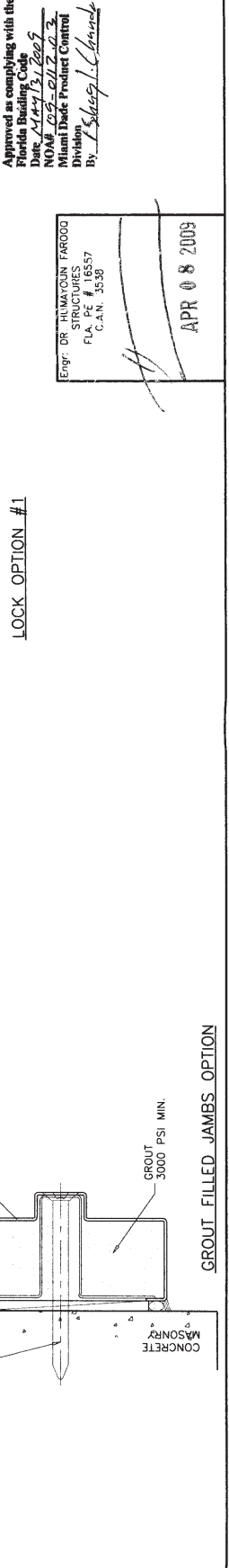
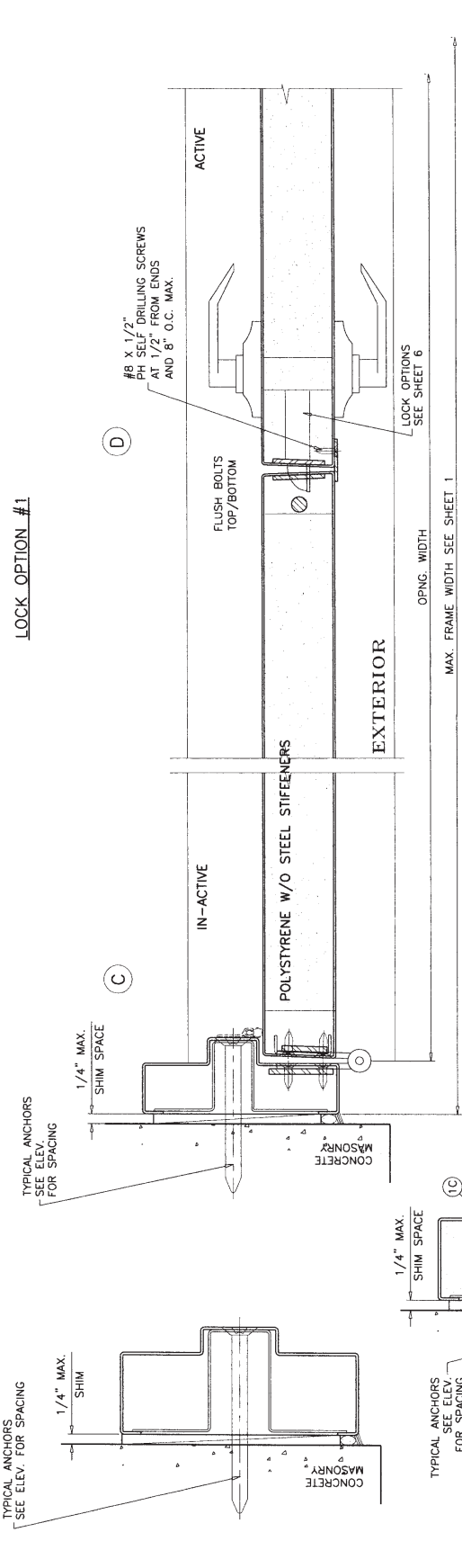
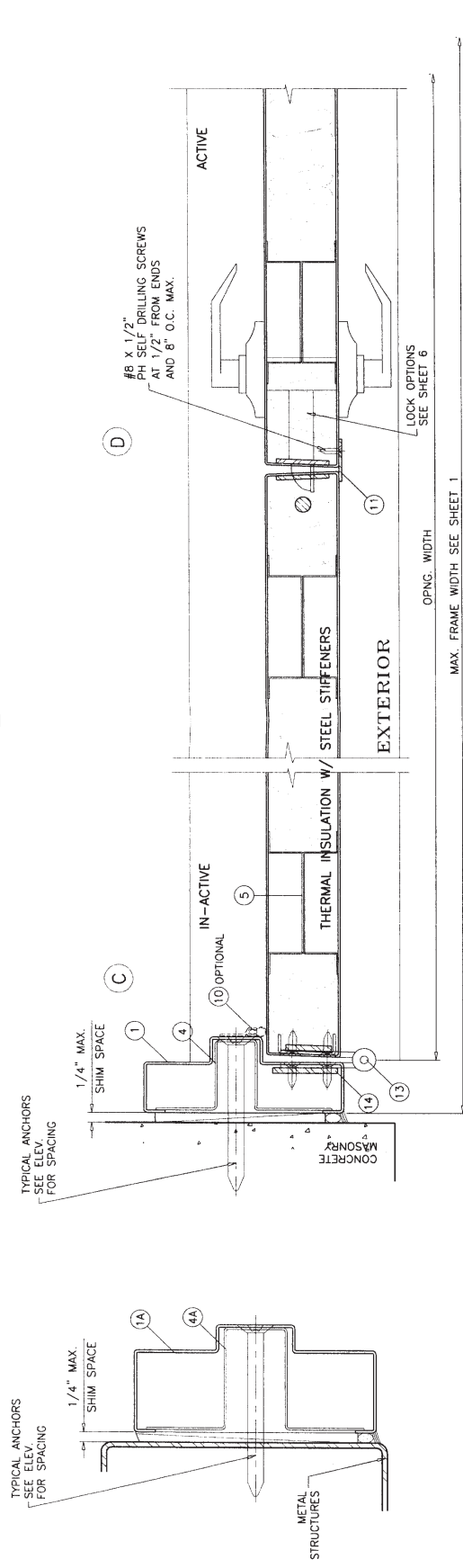
SEALANT:
ALL JOINTS AND CORNERS SEALED WITH SILICONE.

Approved as complying with the Florida Building Code
Date: 11-13-2009
NOA#: 09-012-03
Miami Dade Product Control Division
By: [Signature]

Engr. DR. HUMAYOUN FAROOQ
STRUCTURES
FLA. P.E. # 16587
C.A.N. 3538

APR 08 2009

NO	date	description
A	02.13.09	REV. PER BCCO COMMENTS
B	04.06.09	NO CHANGE THIS SHEET



Approved as complying with the
 Florida Building Code
 Date: 11/13/2009
 NOA# 09-0112-03
 Miami Door Product Control
 Division
 By: *L. Sheehy, L. Chinn*

Eng'g DR: MILWAQUIN FAROOO
 STRUCTURES
 FLA. PE # 16557
 C.A.N. 3539

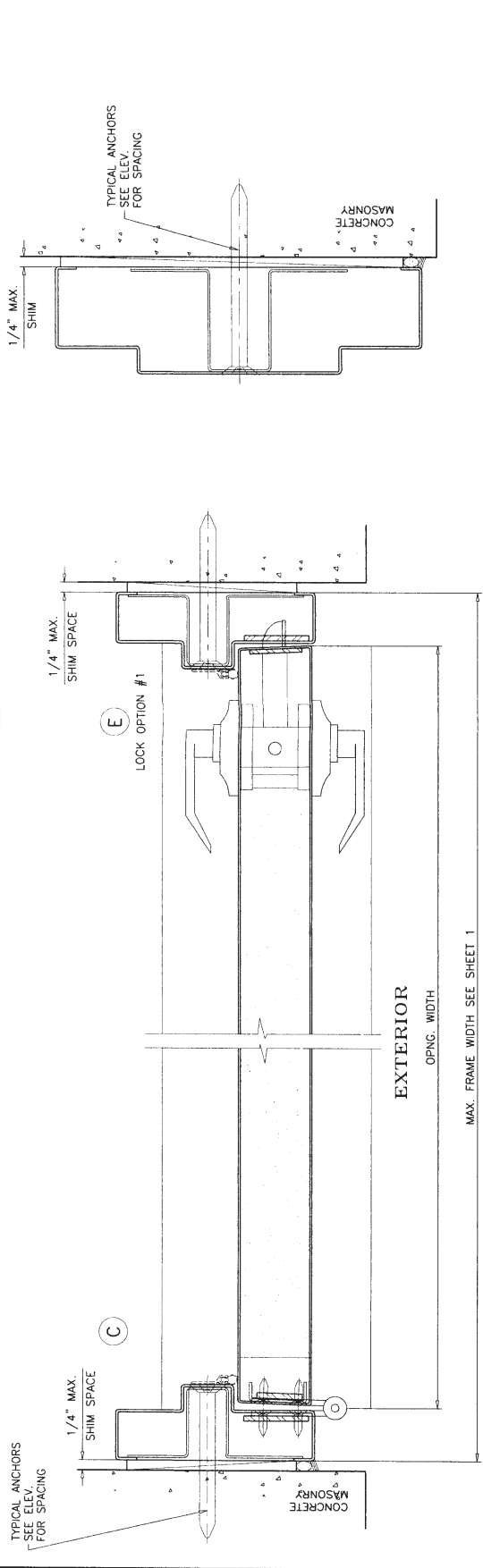
APR 08 2009

AL-FAROOQ CORPORATION
 ENGINEERS & PRODUCT DEVELOPMENT
 1235 S.W. 87 AVE
 MIAMI, FLORIDA 33174
 TEL (305) 264-8100
 FAX (305) 262-6978
 COMP-ANL\W08-85NDC

8080F OUT-SWING STEEL ENTRANCE DOOR
 NEXT DOOR COMPANY
 1300 N.W. 74TH STREET
 MIAMI, FL. 33147
 TEL (305) 691-1589
 FAX (305) 836-2584

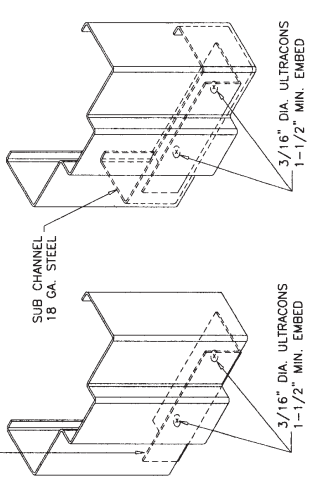
no	date	description
A	02.13.09	REV. PER BCCO COMMENTS
B	04.06.09	NO CHANGE THIS SHEET

date: 10-08-08
 scale: 3/8" = 1"
 drawing no. W08-85
 sheet 4 of 7



Approved as complying with the
 Florida Building Code
 Date: May 13, 2009
 NO# 05-0112-03
 Miami Dade Product Control
 Division
 By: Greg I. Lynch

1-3/8" X 1-3/4" X .053" THK.
 STEEL/ST. STEEL ANGLE, 4-1/2" LONG
 WELDED TO FRAME JAMBS

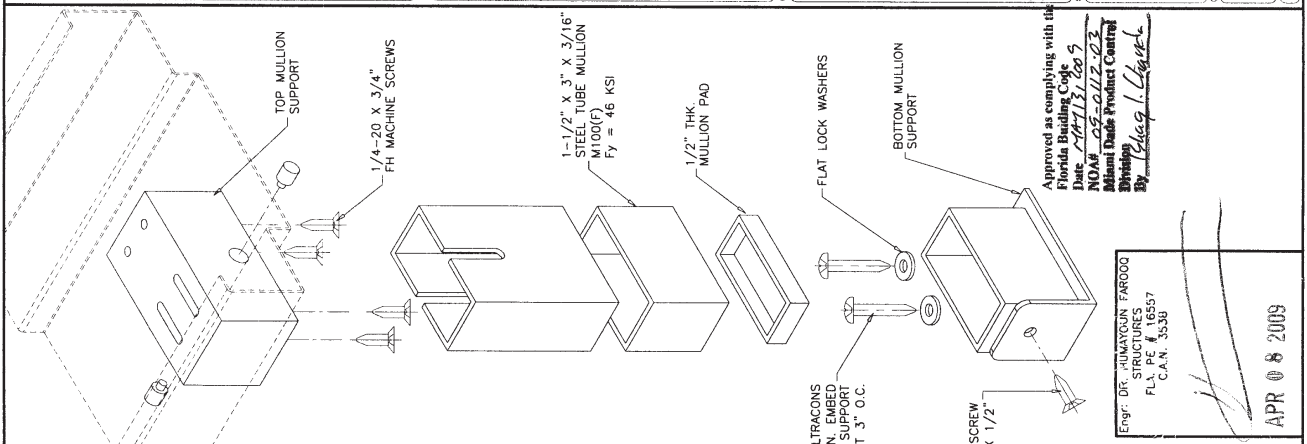


BOTTOM CORNER ANCHORS DETAIL

Engr. DR. RUMAYOUN FAROOQ
 STRUCTURES
 FLA. P.C. # 16557
 C.A.N. 3538

APR 08 2009

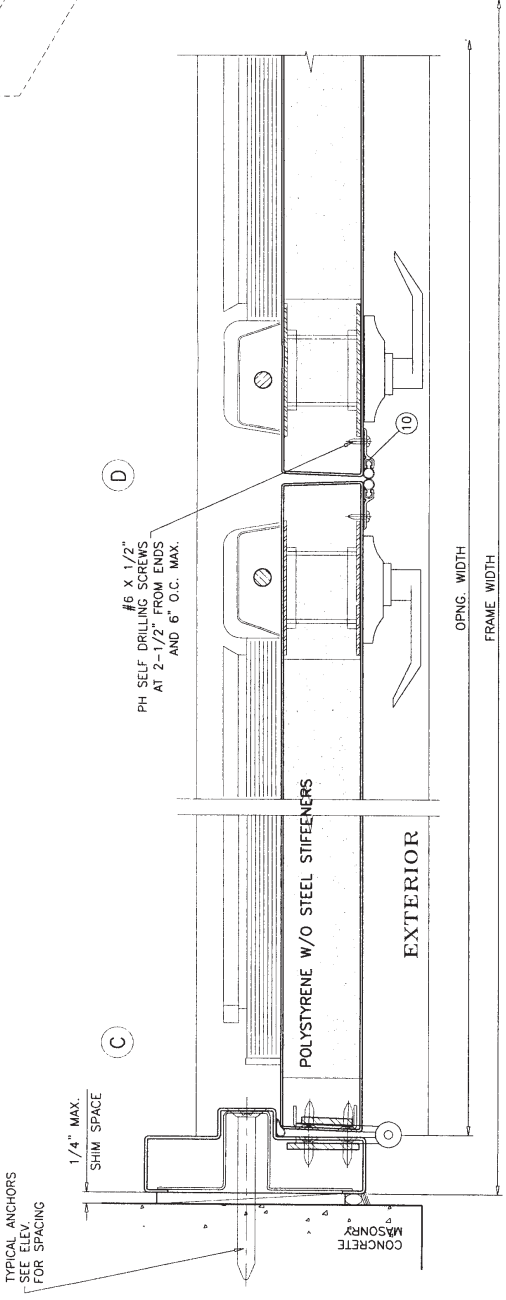
no.	date	description
A	04.06.09	REV. PER BCCO COMMENTS
B	04.06.09	REV. PER BCCO COMMENTS



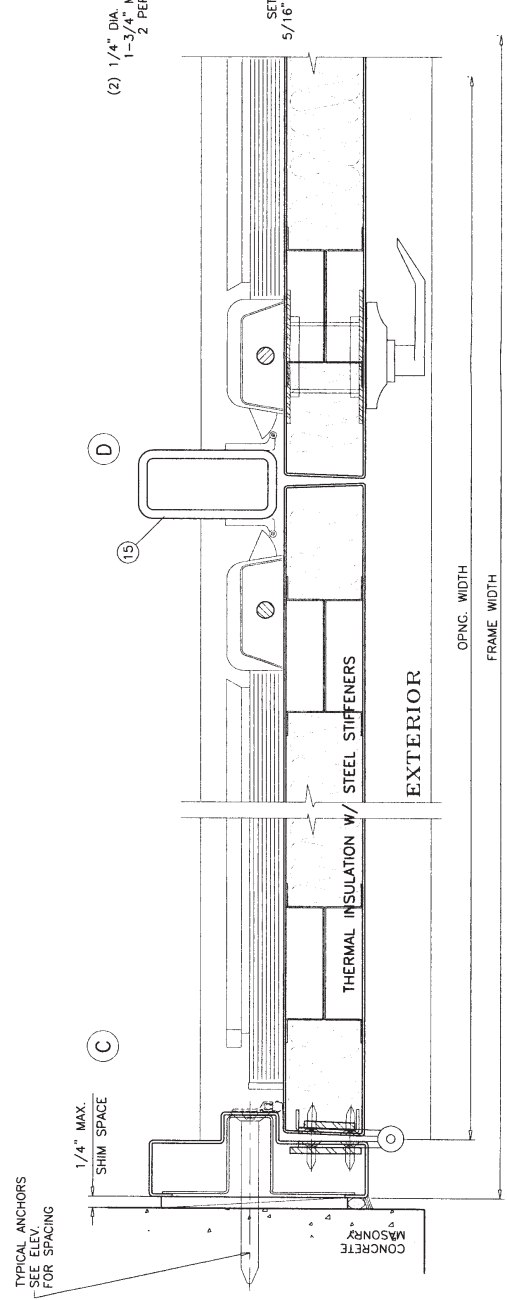
Approved as complying with the Florida Building Code
 with the following conditions:
 1. M1000(F)
 2. M1000(F)
 3. M1000(F)
 4. M1000(F)
 5. M1000(F)
 6. M1000(F)
 7. M1000(F)
 8. M1000(F)
 9. M1000(F)
 10. M1000(F)
 11. M1000(F)
 12. M1000(F)
 13. M1000(F)
 14. M1000(F)
 15. M1000(F)
 16. M1000(F)
 17. M1000(F)
 18. M1000(F)
 19. M1000(F)
 20. M1000(F)
 21. M1000(F)
 22. M1000(F)
 23. M1000(F)
 24. M1000(F)
 25. M1000(F)
 26. M1000(F)
 27. M1000(F)
 28. M1000(F)
 29. M1000(F)
 30. M1000(F)
 31. M1000(F)
 32. M1000(F)
 33. M1000(F)
 34. M1000(F)
 35. M1000(F)
 36. M1000(F)
 37. M1000(F)
 38. M1000(F)
 39. M1000(F)
 40. M1000(F)
 41. M1000(F)
 42. M1000(F)
 43. M1000(F)
 44. M1000(F)
 45. M1000(F)
 46. M1000(F)
 47. M1000(F)
 48. M1000(F)
 49. M1000(F)
 50. M1000(F)
 51. M1000(F)
 52. M1000(F)
 53. M1000(F)
 54. M1000(F)
 55. M1000(F)
 56. M1000(F)
 57. M1000(F)
 58. M1000(F)
 59. M1000(F)
 60. M1000(F)
 61. M1000(F)
 62. M1000(F)
 63. M1000(F)
 64. M1000(F)
 65. M1000(F)
 66. M1000(F)
 67. M1000(F)
 68. M1000(F)
 69. M1000(F)
 70. M1000(F)
 71. M1000(F)
 72. M1000(F)
 73. M1000(F)
 74. M1000(F)
 75. M1000(F)
 76. M1000(F)
 77. M1000(F)
 78. M1000(F)
 79. M1000(F)
 80. M1000(F)
 81. M1000(F)
 82. M1000(F)
 83. M1000(F)
 84. M1000(F)
 85. M1000(F)
 86. M1000(F)
 87. M1000(F)
 88. M1000(F)
 89. M1000(F)
 90. M1000(F)
 91. M1000(F)
 92. M1000(F)
 93. M1000(F)
 94. M1000(F)
 95. M1000(F)
 96. M1000(F)
 97. M1000(F)
 98. M1000(F)
 99. M1000(F)
 100. M1000(F)

Engr. DR. HUYANGUN FAROOQ
 STRUCTURES
 FLA. PE # 16557
 C.A.N. 3538

APR 8 2009



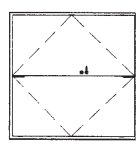
LOCK OPTION #2
 (YALE PANIC W/ VERTICAL RODS)



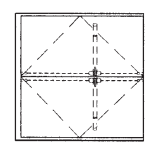
LOCK OPTION #3
 (YALE PANIC W/ YALE M1000 MULLION)

ITEM NO.	PART NO.	QUANTITY	DESCRIPTION	MATERIAL	MANF./SUPPLIER/REMARKS
1	AS RECD.	1	FRAME HEAD/JAMB (4'-3/4" X 1'-1/4")	STEEL/ST. STL.	16 GA. (.053") MIN. Fy = 49.0 KSI
1A	AS RECD.	1	FRAME HEAD/JAMB (5'-3/4" X 2')	STEEL/ST. STL.	16 GA. (.053") MIN. Fy = 49.0 KSI
1B	AS RECD.	1	FRAME HEAD/JAMB (8'-3/4" X 4')	STEEL/ST. STL.	16 GA. (.053") MIN. Fy = 49.0 KSI
1C	AS RECD.	1	FRAME HEAD/JAMB (4'-3/4" X 2')	STEEL/ST. STL.	16 GA. (.053") MIN. Fy = 49.0 KSI
2	AS RECD.	1	FRAME JAMB (8'-3/4" X 2')	STEEL/ST. STL.	16 GA. (.053") MIN. Fy = 49.0 KSI
3	200SAT	1	THRESHOLD	ALUMINUM	PEMKO
3A	2051AT	1	THRESHOLD	ALUMINUM	PEMKO
4	AS RECD.	1	BOLT SPACER (1'-1/4" FRAME)	STEEL/ST. STL.	18 GA.
4A	AS RECD.	1	BOLT SPACER (2" FRAME)	STEEL/ST. STL.	18 GA.
4B	AS RECD.	1	BOLT SPACER (4" FRAME)	STEEL/ST. STL.	18 GA.
5	B/ LEAF	1	HAT STIFFENER IN PAIRS (4 ROWS VERTICAL)	STEEL/ST. STL.	22 GA.
6	AS RECD.	1	DOOR	STEEL/ST. STL.	18 GA. (.042") MIN. Fy = 52.0 KSI
7	2/ LEAF	1	TOP AND BOTTOM RAIL CHANNEL (FULL LENGTH)	STEEL/ST. STL.	7/8 X 1-21/32 X 7/8 X 16 GA.
8	1/ LEAF	1	TOP RAIL CAP (FULL LENGTH)	STEEL/ST. STL.	3/4 X 1-1/2 X 3/4 X 18 GA.
9	AS RECD.	1	POLYSTYRENE	—	DYPLAST W/ CURRENT NOA
9A	AS RECD.	1	THERMAL INSULATION	—	OWENS CORNING RA-24 BATT
10	303AV	1	W/STRIPPING ADAPTER (OPTIONAL AT HEAD/JAMBS)	—	PEMKO
11	AS RECD.	1	FLAT BAR ASTRAGAL	STEEL/ST. STL.	14 GA.
12	S88	1	FRAME W/STRIPPING	VINYL	PEMKO
13	3/ LEAF	1	MORTISE HINGES	STEEL	—
14	2/ HINGE	1	HINGE REINFORCEMENT (FRAME/DOOR)	STEEL/ST. STL.	1-1/4" X 10" X 7 GA.
15	AS RECD.	1	1-1/2" X 3" X 3/16" THK. MULLION TUBE	STEEL	—

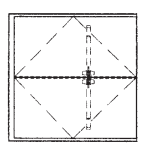
LOCK OPTIONS:
ACTIVE LEAF:
'YALE' 8800 SERIES SURFACE MOUNT MORTISE LOCK WITH A DEAD BOLT FUNCTION, FASTENED WITH (2) #6 X 3/8" PH SELF DRILLING SCREWS, 4-7/8" LONG STEEL STRIKE PLATE AT 38" FROM BOTTOM, FASTENED TO INACTIVE LEAF WITH (2) #12 X 1" FH SMS
INACTIVE LEAF:
'MCKINNEY F801M' MANUALLY OPERATED FLUSH BOLTS AT 12" FROM EACH END OF LEAF FASTENED WITH (4) #8-32 X 3/4" FH MACHINE SCREWS STEEL STRIKE PLATES FASTENED TO HEAD AND SILL WITH (2) #8 X 3/4" PH SELF DRILLING SCREWS
NOTE: TOP AND BOTTOM FLUSH BOLTS MUST BE ENGAGED DURING PERIODS OF HURRICANE WARNING.
OPTION #1: MORTISE LOCK W/ DEAD BOLT FUNCTION



OPTION #1
MORTISE LOCK
W/ DEAD BOLT FUNCTION

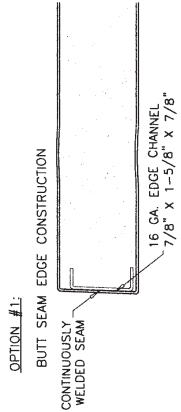
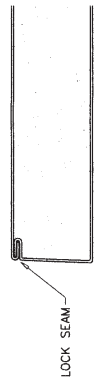


OPTION #2



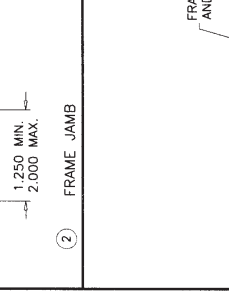
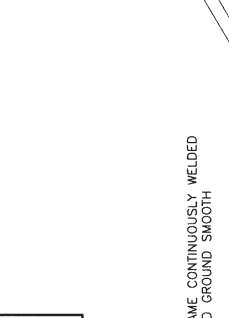
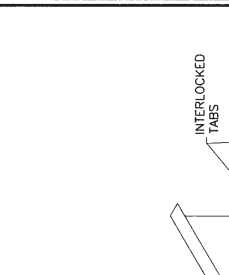
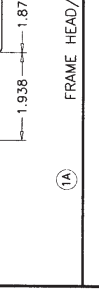
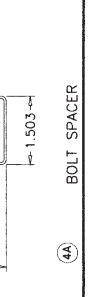
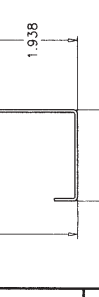
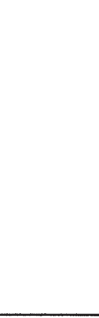
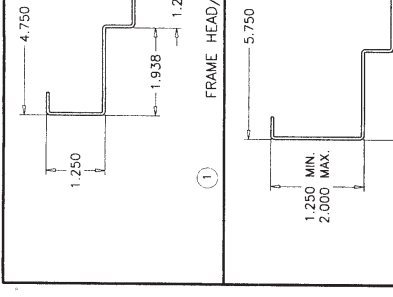
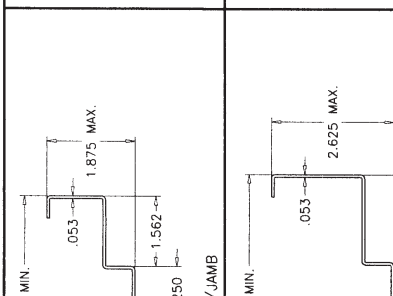
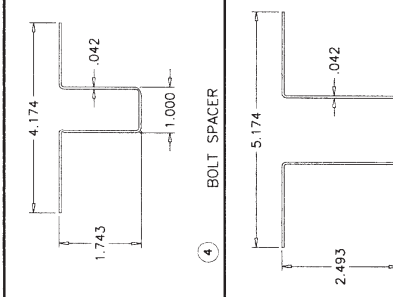
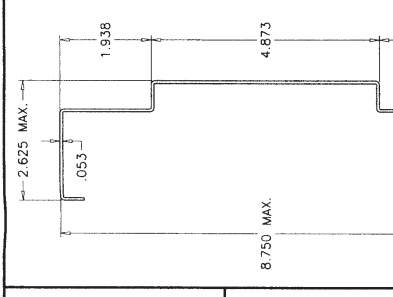
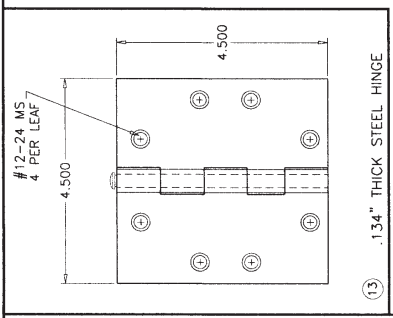
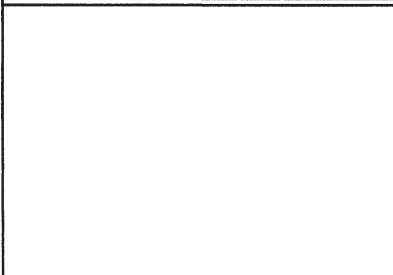
OPTION #3

HINGES:
STEEL MORTISE HINGES 3 PER LEAF AT 7-1/4" FROM TOP TO CL OF HINGE; AT 12-1/4" FROM BOTTOM TO CL OF HINGE. CENTER HINGE EQUALLY SPACED FROM TOP & BOTTOM HINGE FASTENED WITH #12-24 X 1/2" FH MACHINE SCREWS FOUR PER HASP(LEAF).
DOOR EDGE CONSTRUCTION OPTIONS:
OPTION #1: LOCK SEAM EDGE CONSTRUCTION
OPTION #2: BUTT SEAM EDGE CONSTRUCTION CONTINUOUSLY WELDED SEAM
OPTION #3: BUTT SEAM EDGE CONSTRUCTION 16 GA. EDGE CHANNEL 7/8" X 1-5/8" X 7/8"



Engr. DR. HUMAYUN FAROOQ
STRUCTURES
FLA. PE # 16557
C.A.N. 3538
APR 08 2009

Approved as complying with the Florida Building Code.
Date: May 15, 2009
NOA# 09-012-03
Miami Dade Product Control Division
By: [Signature]



Approved as complying with the Florida Building Code
 Date: 11/11/09
 NOAH BY-0112-03
 Miami-Dade Product Control Division
 By: [Signature]

Engr. DR. HUMAYOUN FARGOO
 STRUCTURES
 FLA. P.C. # 16057
 C.A.N. 3538

APR 08 2009